



- Close unneeded panel holes and electrical knockouts.
- Quick and easy installation.
- Convex, matte finish head tapers to thin edge (Except DP-187).
- Multiple sizes for use in .187" (4,7 mm) to 6.000" (152,4 mm) diameter holes.
- Lock firmly into panel up to .250" (6,4 mm) thick.
- Locking fingers in fractional increments up to the maximum panel thickness.
- Approximate Head Thickness: .062" (1,6 mm). Thickness may vary.
- For Snap-In Metric Dome Plugs see page 6-30.

## Heyco® Dome Plugs

Mounting Hole Diameter Range: .187" (4,7 mm) to 2.500" (63,5 mm)

MOUNTING HOLE DIAMETER	PART NO.			DESCRIPTION	PART DIMENSIONS			
	Black	White	Colors xx**		A Head Diameter		B Overall Height	
in. mm.					in.	mm.	in.	mm.

Single Locking Step for Panel Thickness up to .062" (1,6 mm)

.187	4,7	<b>2590</b>	<b>2591</b>	2592xx	DP 187*	.25	6,4	.23	5,9
.250	6,4	<b>2607</b> <b>2603</b>	<b>2608</b> <b>2604</b>	2609xx 2605xx	DP 250-040† DP 250	.31	7,9	.31	7,9
.312	7,9	<b>2613</b>	<b>2614</b>	2615xx	DP 312	.38	9,5		

Multiple Locking Steps for Panel Thickness up to .125" (3,2 mm)

.375	9,5	<b>2617</b>	<b>2618</b>	2619xx	DP 375	.47	11,9	.41	10,3
.437	11,1	<b>2633</b>	<b>2634</b>	2635xx	DP 437	.53	13,5		
.500	12,7	<b>2643</b>	<b>2644</b>	2645xx	DP 500	.56	14,2		
.562	14,3	<b>2653</b>	<b>2654</b>	2655xx	DP 562	.66	16,7		
.625	15,9	<b>2663</b>	<b>2664</b>	2665xx	DP 625	.72	18,2		
.687	17,4	<b>2673</b>	<b>2674</b>	2675xx	DP 687	.78	19,8		
.750	19,1	<b>2683</b>	<b>2684</b>	2685xx	DP 750	.92	23,4	.45	11,5
.812	20,6	<b>2693</b>	<b>2694</b>	2695xx	DP 812	.99	25,1		
.875	22,2	<b>2703</b>	<b>2704</b>	2705xx	DP 875	1.02	25,8		
1.000	25,4	<b>2713</b>	<b>2714</b>	2715xx	DP 1000	1.20	30,6		
1.093 - 1.125	27,8 - 28,6	<b>2723</b>	<b>2724</b>	2725xx	DP 1093	1.22	30,9		
1.187	30,1	<b>2733</b>	<b>2734</b>	2735xx	DP 1187	1.33	33,8		
1.250	31,7	<b>2740</b>	<b>2741</b>	2742xx	DP 1250	1.38	34,9	.47	11,9
1.375	34,9	<b>2753</b>	<b>2754</b>	2755xx	DP 1375	1.50	38,1		
1.500	38,1	<b>2763</b>	<b>2764</b>	2765xx	DP 1500	1.67	42,4		
1.625	41,3	<b>2276</b>	<b>2277</b>	2278xx	DP 1625	1.80	45,7		
1.750	44,5	<b>2773</b>	<b>2774</b>	2775xx	DP 1750	1.92	48,7		
1.875	47,6	<b>2291</b>	<b>2292</b>	2293xx	DP 1875	2.05	52,1		
2.000	50,8	<b>2783</b>	<b>2784</b>	2785xx	DP 2000	2.17	55,1		

NEW!

NEW!

Multiple Locking Steps for Panel Thickness up to .250" (6,4 mm)

2.093 - 2.125	53,2 - 54,0	<b>2403</b>	<b>2404</b>	***	DP 2.093	2.34	59,9	.75	19,1
2.250	57,2	<b>2411</b>	<b>2412</b>	2413xx	DP 2.25	2.48	63,0	.75	19,1
2.500	63,5	<b>2790</b>	<b>2791</b>	2792xx	DP 2.5	2.71	68,8		

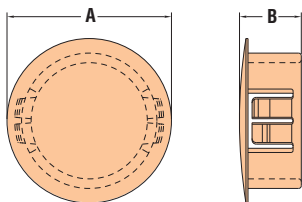
Standard colors black and white. Consult Heyco for other colors (see below)

\*Convex, glossy finish head.

\*\*xx indicates that, following the color match process, Heyco adds a two letter suffix to the Root Part No. shown. This suffix will identify your particular CUSTOM Color selection. Consult Heyco for molded nylon color chips for accurate matching. For details as well as information regarding our Stock Colors, see page 6-53.

\*\*\*Consult Heyco for root Part No.

† Max panel thickness is .040" (1,0 mm)



*Quick Specs*

Material  
Certifications

Nylon 6/6



Recognized under the Component Program of Underwriters' Laboratories File E51579



Certified by the Canadian Standards Association File 8919

Flammability Rating  
Temperature Range

94V-2

-40°F (-40°C) to 221°F (105°C)



## Heyco® Double D Hole Plugs

For Mounting Holes with Flats

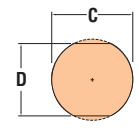
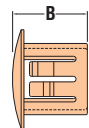
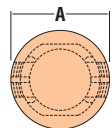
Multiple Locking Steps for Panel Thickness up to .125" (3,2 mm)

PANEL DIMENSIONS				PART NO.		DESCRIPTION	PART DIMENSIONS			
D Mounting Hole Dia.		C To Prevent Rotation		Black	White		A Head Diameter		B Overall Height	
in.	mm.	in.	mm.				in.	mm.	in.	mm.
.375	9,5	.345	8,8	<b>2617</b>	<b>2618</b>	DP 375*	.47	11,9	.41	10,3
.437	11,1	.390	9,9	<b>2488</b>	<b>2489</b>	DD 437-390	.53	13,5		
.500	12,7	.445	11,3	<b>2491</b>	<b>2492</b>	DD 500-445	.55	14,7		
.562	14,3	.530	13,5	<b>2494</b>	<b>2495</b>	DD 562-530	.66	16,7		
.625	15,9	.550	14,0	<b>2497</b>	<b>2498</b>	DD 625-550	.73	18,5		
.750	19,1	.625	15,9	<b>2503</b>	<b>2504</b>	DD 750-625	.92	23,4		
.875	22,2	.770	19,5	<b>2509</b>	<b>2510</b>	DD 875-770	1.02	25,8	.45	11,5
				<b>2511</b>	—	DD 875-770-9**	.94	23,8		
1.109	28,2	1.000	25,4	<b>2717</b>	<b>2718</b>	DD 1109-1000	1.22	30,9		
2.000	50,8	1.875	47,6	<b>2959</b>	<b>2963</b>	DD 2000-1875	2.17	55,1	.48	12,1

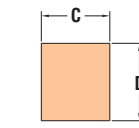
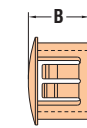
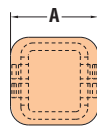
Standard colors black and white. Consult Heyco for other colors.

\*On installation, DP 375 Locking Fingers must be aligned with Mounting Hole Flats.

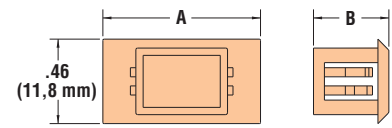
\*\*Smaller than standard Head Diameter, for clearance situations.



MOUNTING HOLE



MOUNTING HOLE



3299, 3388, 3389

DD Series

RP Series

## Heyco® Rectangular Blanking & Connector Port Plugs

Multiple Locking Steps for Various Panel Thicknesses

PANEL DIMENSIONS					PART NO.	DESCRIPTION	PART DIMENSIONS			
Maximum Thickness		C Length		D Width			A Head Dimensions		B Overall Height	
in.	mm.	in.	mm.	in.	mm.	Black	in.	mm.	in.	mm.
Rectangular Blanking Plugs										
.025	0,64	.964	24,5	.964	24,5	<b>13910</b>	RP 245-245	1.06 x 1.06	26,9 x 26,9	.30
						<b>13911</b>	RB 245-245*	1.05 x 1.05	26,7 x 26,7	
.04	1,0	.27	6,9	.29	7,4	<b>2512</b>	RP 69-74	.37 x .37	9,4 x 9,4	.33
.10	2,5	.45	11,5	.51	13,9	<b>1890</b>	RP 115-130	.58 x .58	14,7 x 14,7	.40
.16	4,0	.69	17,5	.69	17,5	<b>1892</b>	RP 175-175	.83 x .83	21,1 x 21,1	.47

Connector Port Plugs

.14	3,5	.37	9,5	.51	13,0	<b>3299</b>	RP 95-130-1	.63	16,0	.41
						<b>3388</b>	RP 95-130	.87	22,0	
				1.02	26,0	<b>3389</b>	RP 95-260	1.38	35,0	

Standard color black.

\*Bushing version of the above plug.

Material  
Certifications

Nylon 6/6  
Recognized under the Component Program of Underwriter Laboratories File E51579 (DD only)

Flammability Rating  
Temperature Range

94V-2  
-40°F (-40°C) to 221°F (105°C)

- Blank unused rectangular panel holes.
- PN 1890** - UR Recognized under the Component Program of Underwriters' Laboratories File E15331.
- PN 1892** - UR Recognized under the Component Program of Underwriters' Laboratories File E51579 and CSA Certified by the Canadian Standards Association File 8919.

Quick  
Specs